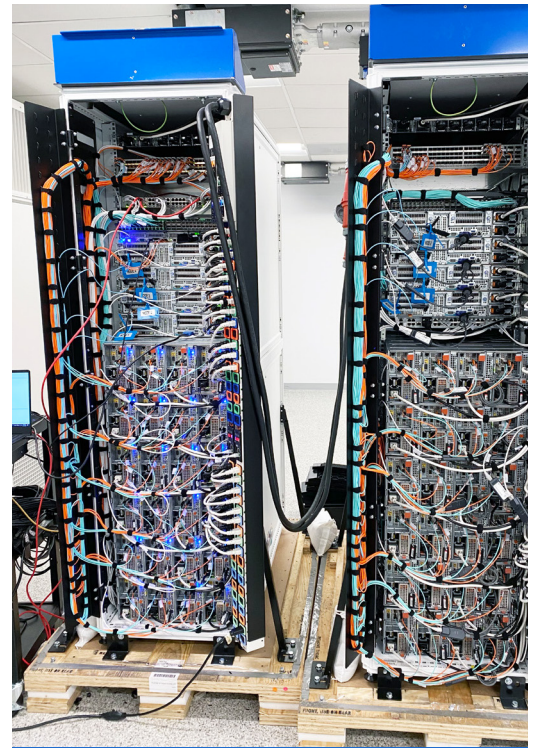


### IT Integration Services

Strategic business outcomes, technology optimization and ongoing organization enablement are key drivers of FEDDATA'S enterprise IT integration services and consulting, designed to achieve customer success. Some of those services are:

- ▶ Racked System Design
- ▶ Receive & Unpack Hardware
- ▶ Inventory Check & Asset Tagging/Labeling
- ▶ Professional Assembly & Mounting in Racks
- ▶ Power & Network Cables Provisioning & Installation
- ▶ Intra-Cabinet Cabling (as required)
- ▶ System Updates, Including Firmware & BIOS Upgrades
- ▶ System Imaging
- ▶ Complete Diagnostic & Quality Assurance Inspections on all Installed Equipment
- ▶ Full Documentation, Including Serial Number Recording, Cable List, Layout & Cable Runs, Visio Diagrams & Photo Documentation
- ▶ Electro-Mechanical Assemblies - Rack & Stack Builds
- ▶ Cable Assemblies – from generic to custom
- ▶ Test – Regulatory Compliance, Power, Communications
- ▶ Material & Sub-assembly Sourcing to Board Component Level
- ▶ Component Distribution & Brokerage
- ▶ Configuration & Documentation Services
- ▶ Direct Order Fulfillment – we ship directly to the end customer to expedite product delivery
- ▶ Procurement & Staging
- ▶ QA & System Testing
- ▶ Power, Space and Cooling Planning & Design



*Electro-Mechanical Assembly*



*Assembly and Mounting*



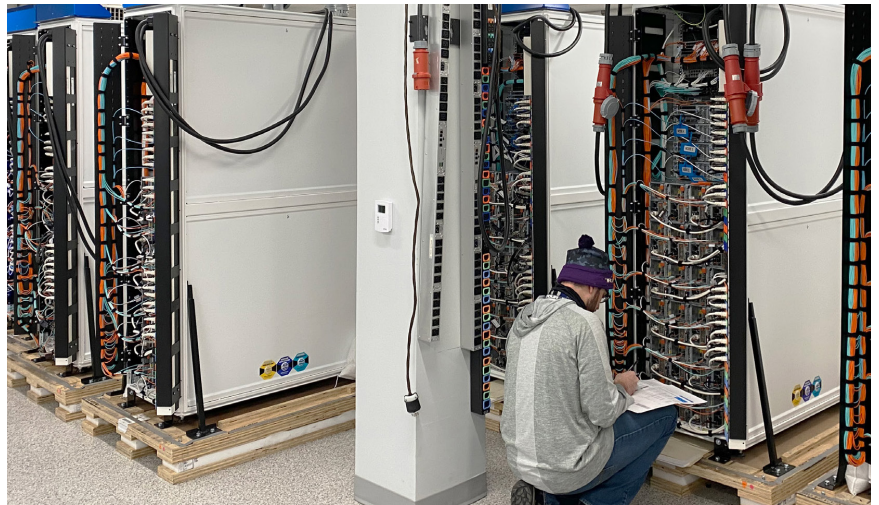
## SECURITY

Cybersecurity risks are a constant threat, and applications need to scale rapidly with users needing access to complex data at increasing speeds while maintaining industry and federal government compliance. FEDDATA Services maintains strong OEM partnership relationships and up to date certifications to ensure your project receives best-of-breed and best-in-class engineering services. FEDDATA's environmentally controlled asset management, production and staging area is conveniently located in the Washington DC/Baltimore MD area.

## FACILITY

FEDDATA, located in Annapolis Junction, Maryland brings a comprehensive turnkey:

- ▶ IT Demo & Evaluation Lab – individual racks with digital locks, 16 racks liquid cooled
- ▶ Integration Room – access controlled, dedicated CRAC unit allows the room to run 14 full-sized cabinets simultaneously
- ▶ SCIF – 3,600 sq. ft. supports classified hardware/software integration up to the TS//SCI level
- ▶ 48,000 sq. ft. Warehouse – with secure storage for sensitive IT products



*Quality Assurance*

## MISSION ENABLING OEM PARTNERSHIPS

The Technology Solutions Unit has comprehensive relationship with numerous Original Equipment Manufactures (OEMs) as well as the experience to create quality relationships with new OEMs quickly.

- ▶ Mobile Data Centers for DoD Tactical Deployments
- ▶ Mission Utility Cloud
- ▶ Expeditionary Forces Operations/Comms with
- ▶ Ruggedized Enclosures